



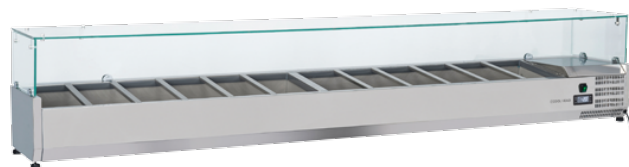
## DETAILS



Tempered glass top

Digital Thermostat

Higher stainless steel adjustable feet as optional



## GENERAL FEATURES

Refrigerated horizontale showcase (Pans GN1/3)	•
Stainless Steel exterior and interior	•
Static Cooling	•
Automatic compressor cycle defrost	•
Single copper pipe evaporator (No welding in the foaming)	•
Digital Thermostat	•
N.4 Adjustable feet	•
Spacer set included	•
GN1/3 Pans are not included with the unit	•
Tempered glass top	•
Energy efficiency class: -	•

## TECHNICAL SPECIFICATIONS

Capacity	108 L
Temperature	+2° ~ +8°C
Consumption	2.5 kWh/24h
Rated Power	160 W
Noise level	56 dB(A)
Net Weight	66 Kg
Gross Weight	108 Kg
External Dimensions (WxDxH mm)	2500x395x440
Internal Dimensions (WxDxH mm)	2150x310x163
Packaging dimensions (WxDxH mm)	2630x465x445
Loading quantities 20'/40'/40'HQ	40/80/80

## CERTIFICATION

CE  RoHS

## PRODUCT DIMENSIONS

